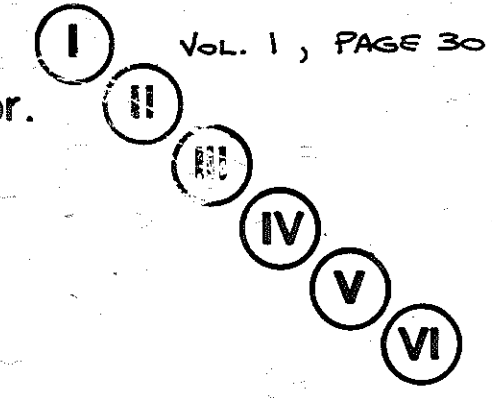
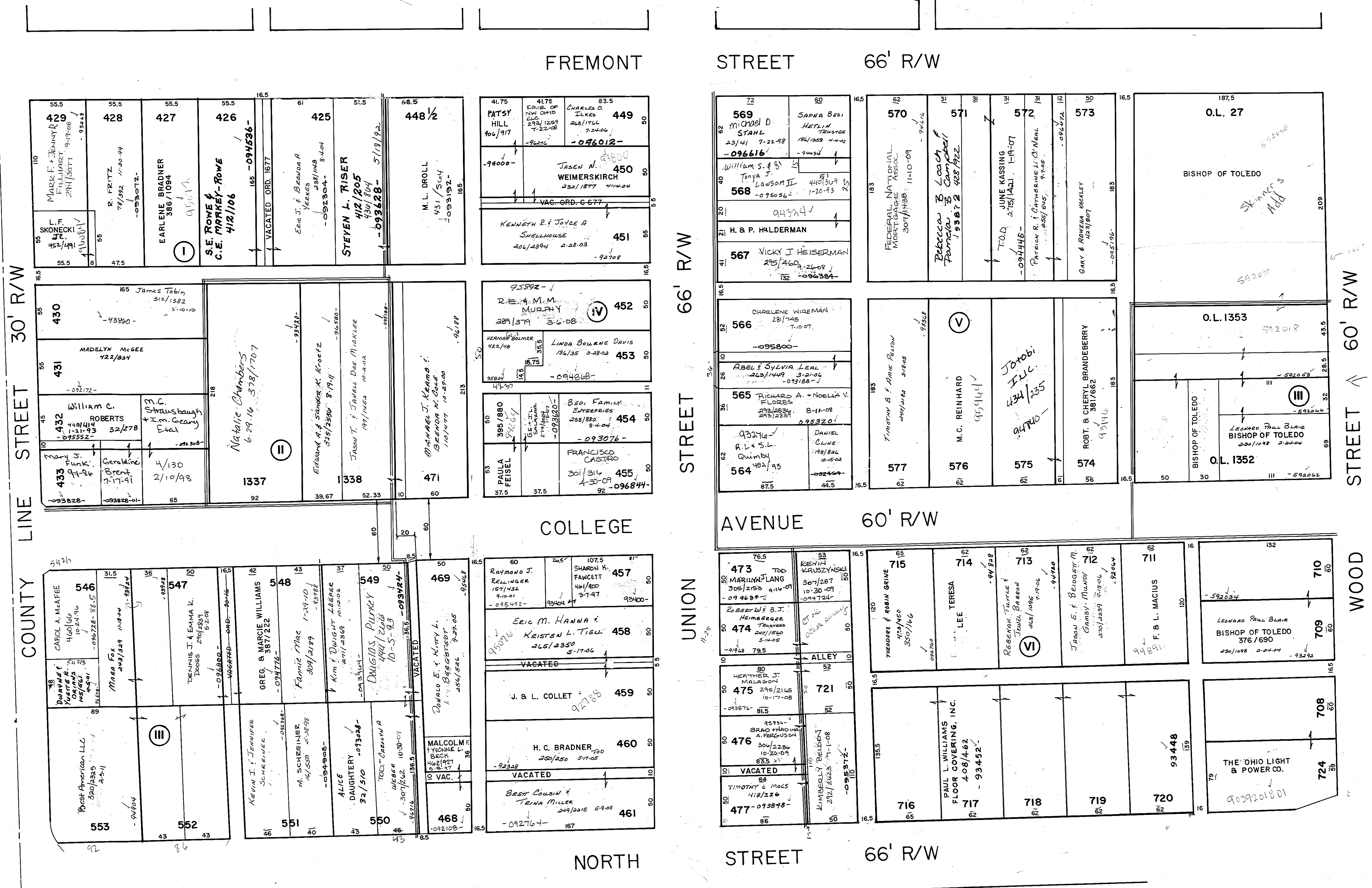
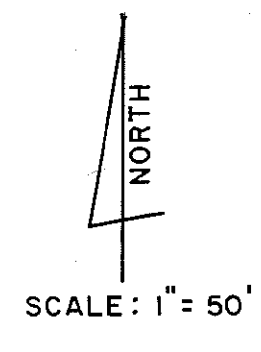


R

SKINNER'S ADD.  
J.V. JONES SUBD. by land appr.  
JAS. ANDERSON'S 2ND. ADD.  
BEMENT'S ADD.  
KELLER'S ADD.  
JAS. FRITCHER ET AL SUBD.



Vol. 1, PAGE 30



FREMONT STREET 66' R/W

STREET 66' R/W

COLLEGE AVENUE 60' R/W

UNION STREET 66' R/W

NORTH STREET 66' R/W

WOOD STREET 60' R/W

COUNTY LINE STREET 30' R/W

Plat?